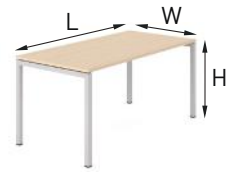


# NOVA U desks



H 740



L 1200; 1400; 1600; 1800  
W 700; 800



L 1200; 1400  
W 600



L 2400; 2800; 3200; 3600  
W 800



L 1200; 1400; 1600; 1800  
W 800



L 1200; 1400; 1600; 1800  
W 1440; 1640



L 2400; 2800; 3200; 3600  
W 1440; 1640



L 1200; 1400; 1600; 1800  
W 1440; 1640



L 1400; 1600; 1800  
W 1200



Ø 2810



L 800  
W 600



L 600  
W 800



L 1440; 1640  
W 600

Possibility to extend the length of the 2 or 4 desk bench by ordering supplementary units.  
We recommend to connect up to 6 back to back units.

## FEATURES

- Easy to assemble and disassemble - "metal to metal" construction
- Just one tool for assembling (DIN911 S5)

## QUALITY STANDARD

- LST EN 527-1:2011
- LST EN 527-2:2017
- LST EN 1730:2012

## TECHNICAL INFORMATION

### Desktop

- 25 mm MFC (melamine) with 2 mm ABS edging;
- 10 mm gap between the legs and the desktop;
- 40 mm gap between the desktops in back to back benches (depth of benches – 1440/1640).

### Metal beam

- Metal tube - 40x20 mm;
- With welded metal plates for leg fixing;
- Powder coated metal, colour matches the legs.

### Legs

- Welded metal tube - 40x40 mm;
- Powder coated metal;
- Plastic feet with height levelling (+10 mm).

### Desktop type



Plain desktop



Desktops with a scallop for wire management



Desktops with a cut-out for grommet and wire management

## GUARANTEE

- 5 years

### Must be ordered

(for desktop with cut-out)

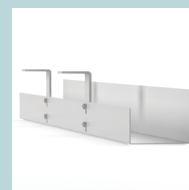


Metal grommet:  
317x119 mm,  
H=27 mm

### Optional



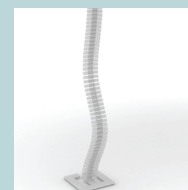
Power socket blocks



Cable trays

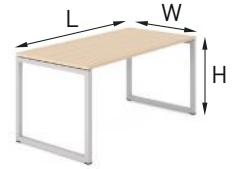


Cable clips



Cable ducts

# NOVA 0 desks



H 740



L 1200; 1400; 1600; 1800  
W 700; 800



L 1200; 1400  
W 600



L 2400; 2800; 3200; 3600  
W 800



L 1200; 1400; 1600; 1800  
W 800



L 1200; 1400; 1600; 1800  
W 1440; 1640



L 1536; 1336  
W 595



L 2400; 2800; 3200; 3600  
W 1440; 1640



L 1200; 1400; 1600; 1800  
W 1440; 1640



L 1400; 1600; 1800  
W 1200



L 800  
W 600

Possibility to extend the length of the 2 or 4 desk bench by ordering supplementary units.  
We recommend to connect up to 6 back to back units.

## FEATURES

- Easy to assemble and disassemble - “metal to metal” construction
- Just one tool for assembling (DIN911 S5)

## QUALITY STANDARD

- LST EN 527-1:2011
- LST EN 527-2:2017
- LST EN 1730:2012

## TECHNICAL INFORMATION

### Desktop

- 25 mm MFC (melamine) with 2 mm ABS edging;
- 10 mm gap between the legs and the desktop;
- 40 mm gap between the desktops in back to back benches (depth of benches – 1440/1640).

### Metal beam

- Metal tube - 40x20 mm;
- With welded metal plates for leg fixing;
- Powder coated metal, colour matches the legs.

### Legs

- Welded metal tube - 40x40 mm;
- Powder coated metal;
- Plastic feet with height levelling (+10 mm).

### Desktop type



Plain desktop



Desktops with a scallop for wire management



Desktops with a cut-out for grommet and wire management

## GUARANTEE

- 5 years

### Must be ordered

(for desktop with cut-out)



Metal grommet:  
317x119 mm,  
H=27 mm

### Optional



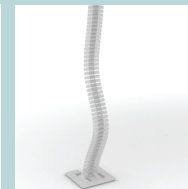
Power socket blocks



Cable trays



Cable clips



Cable ducts

## NOVA A desks



H 740

L 1200; 1400; 1600; 1800  
W 700; 800L 1200; 1400  
W 600L 2400; 2800; 3200; 3600  
W 800L 1200; 1400; 1600; 1800  
W 800L 1200; 1400; 1600; 1800  
W 1440; 1640L 2400; 2800; 3200; 3600  
W 1440; 1640L 1200; 1400; 1600; 1800  
W 1440; 1640L 1400; 1600; 1800  
W 1200L 800  
W 600

Possibility to extend the length of the 2 or 4 desk bench by ordering supplementary units.  
We recommend to connect up to 6 back to back units.

## FEATURES

- Easy to assemble and disassemble - "metal to metal" construction
- Just one tool for assembling (DIN911 S5)

## QUALITY STANDARD

- LST EN 527-1:2011
- LST EN 527-2:2017
- LST EN 1730:2012

## TECHNICAL INFORMATION

### Desktop

- 25 mm MFC (melamine) with 2 mm ABS edging;
- 10 mm gap between the legs and the desktop;
- 40 mm gap between the desktops in back to back benches (depth of benches – 1440/1640).

### Metal beam

- Metal tube - 40x20 mm;
- With welded metal plates for leg fixing;
- Powder coated metal, colour matches the legs.

### Legs

- Welded metal tube - 40x40 mm;
- Powder coated metal;
- Plastic feet with height levelling (+10 mm).

### Desktop type



Plain desktop



Desktops with a scallop for wire management



Desktops with a cut-out for grommet and wire management

## GUARANTEE

- 5 years

### Must be ordered

(for desktop with cut-out)



Metal grommet:  
317x119 mm,  
H=27 mm

### Optional



Power socket blocks



Cable trays



Cable clips



Cable ducts